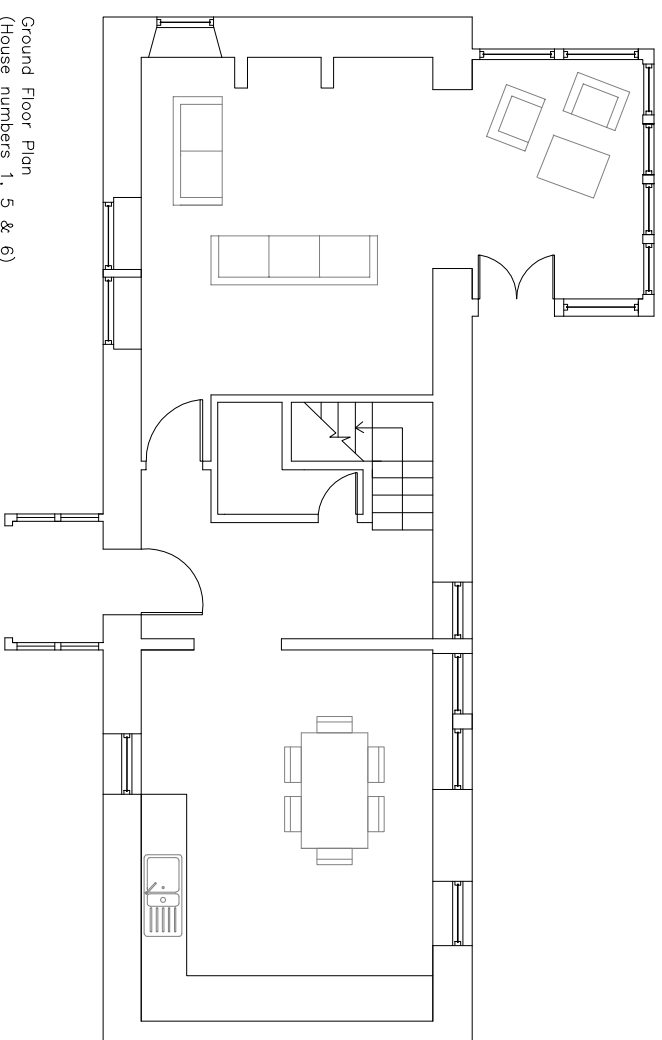
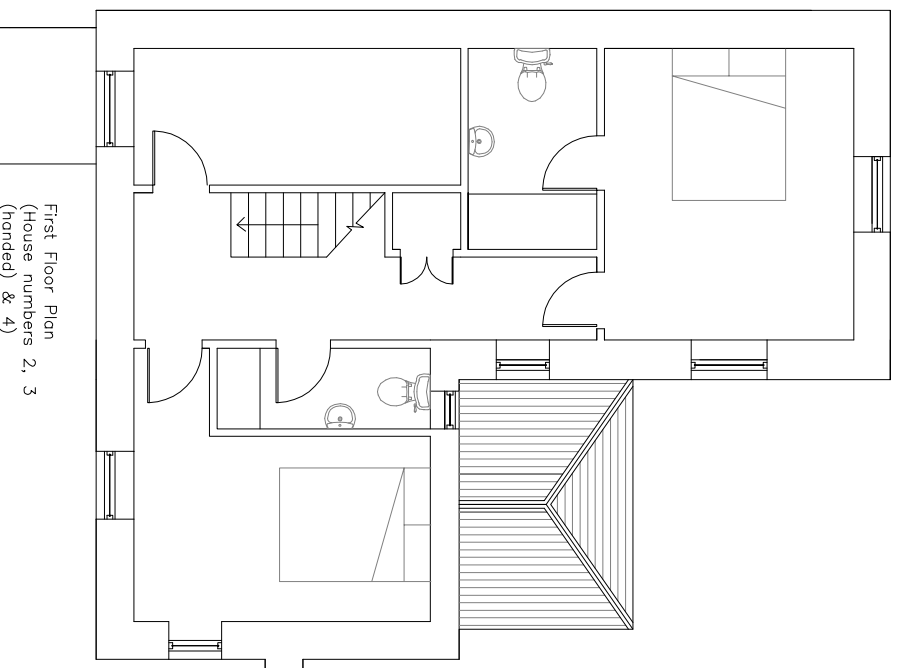


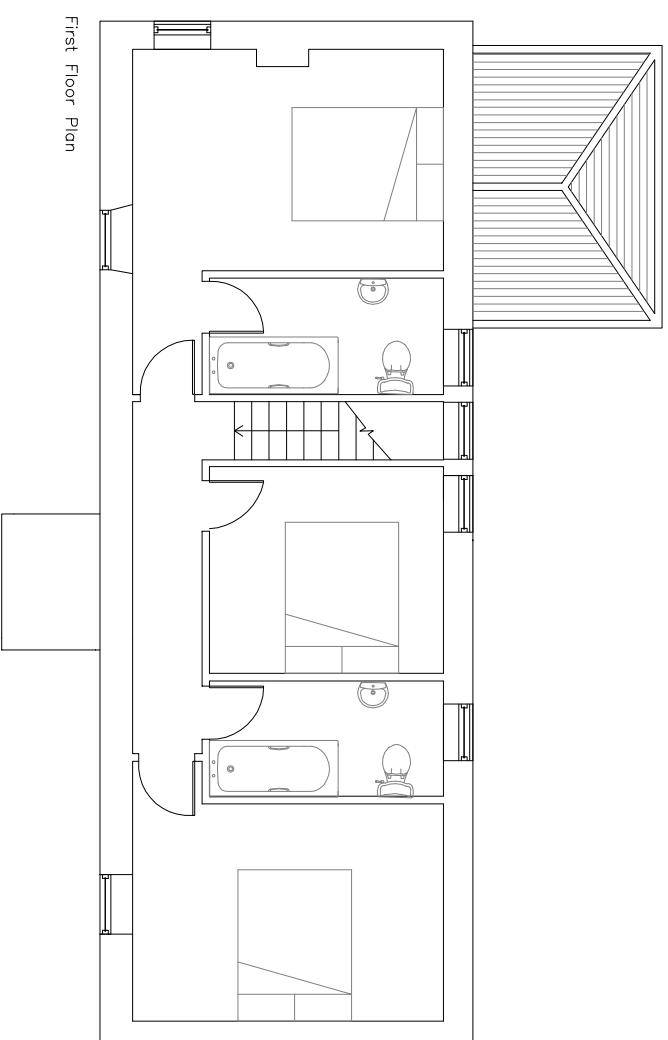
Ground Floor Plan  
(House numbers 2, 3  
(handed) & 4)



Ground Floor Plan  
(House numbers 1, 5 & 6)



First Floor Plan  
(House numbers 2, 3  
(handed) & 4)



First Floor Plan

no.	date	revision and issue (→)
<b>Simpson &amp; Brown Architects</b>		
21 Fenwick's Mansions, Goswold Street, Esherbury, Epsom EC2A 4EJ Tel: 01373 550546/8 Fax: 01373 553437/6 <a href="http://www.simpsonandbrown.co.uk">www.simpsonandbrown.co.uk</a>		
<b>client</b> Eshott Horres		
<b>job title</b> Eshott Village		
<b>drawing title</b> Bombridge Mews Proposed Plans		
<b>CAD reference</b>		
<b>scale at A1</b> 1:50	<b>drawn</b> SD	<b>chk</b> SD
<b>date</b> Nov 2007	<b>drawn no</b> 1555.00	<b>chk no</b> BM-02
<b>revision no</b>	<b>revision no</b>	<b>revision no</b>